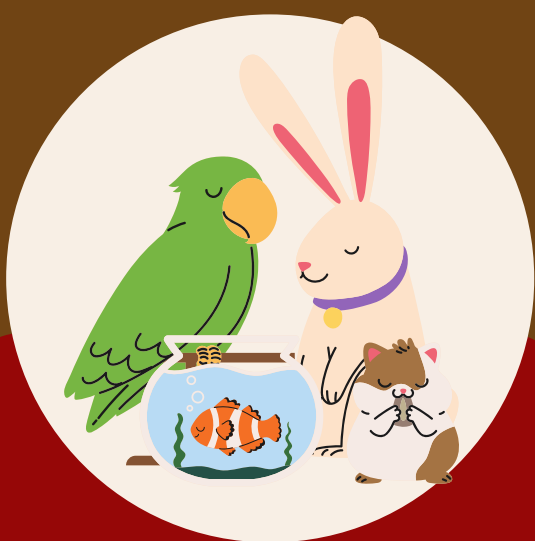


WHAT'S THE DIFFERENCE?



ESA

A pet that provides therapeutic benefit, such as emotional support, comfort, or companionship, to an individual with a mental or psychiatric disability

Is allowed in housing and on some airlines

No training is required, but landlords do retain the right to revoke access if the animal presents a danger to others.

Requires a letter from a mental health provider for housing. Extra documentary is required for flights

FHA and ACAA



SERVICE DOG

A dog or miniature horse that is individually trained to perform tasks or work for a person with a disability, directly alleviating the effects of that disability

Allowed in housing, planes and any public space

Must be highly trained. Must be trained in work or perform tasks for the benefit of an individual with a disability.

No documentary required, but some may be required for housing and flights

ADA, FHA, ACAA

DEFINITION

ACCESS

TRAINING

DOCUMENTATION

LAWS